

The forming external genitalia are not visible in this view of an 8 week human embryo on the left due to the *prominent tail*. The human tail regresses, as is evident in the 10 week embryo on the right.

Select Image:

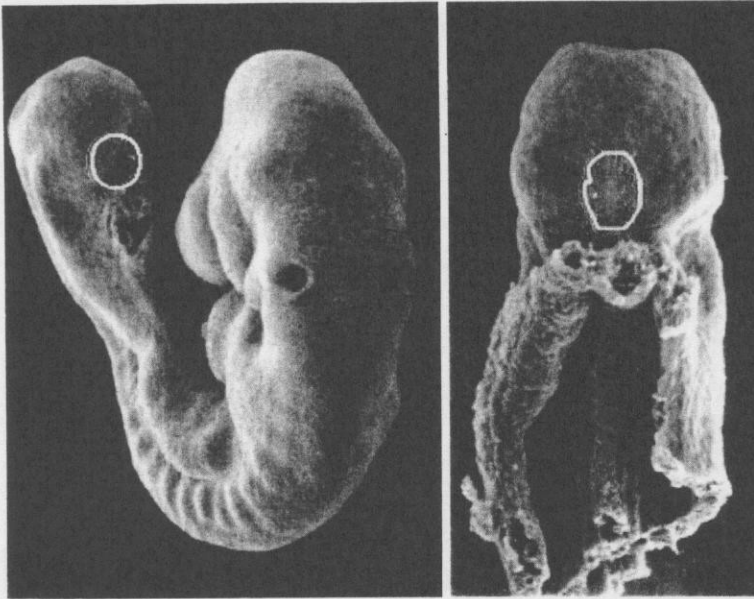
▾

Species: Human
Day Gestation: 8; 10 wks
Approx. Human Age:
View: Caudal

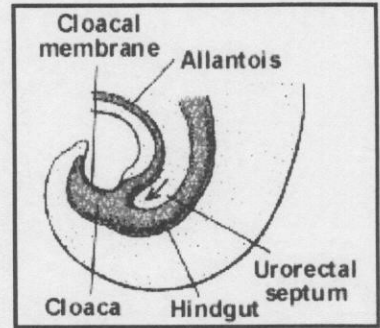
External Genitalia
20 of 28



Select Image:

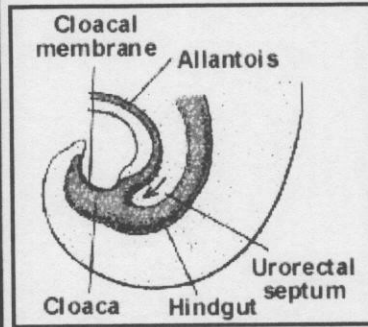
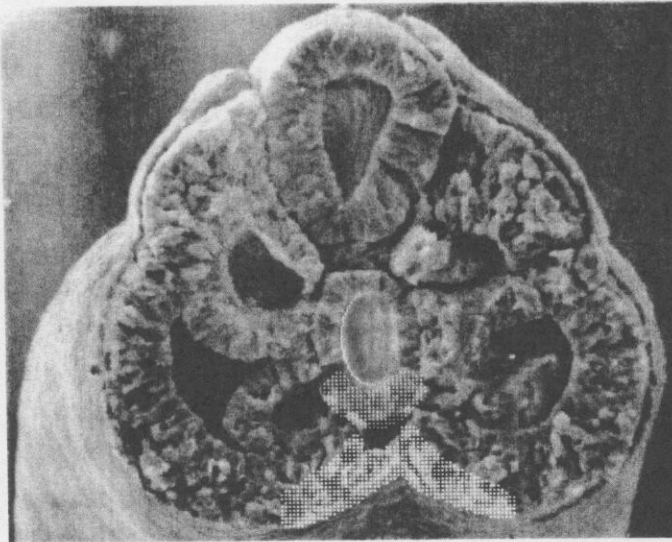


The external genitalia form around the cloacal plate or membrane.



Species: Mouse
Day Gestation: 9
Approx. Human Age: 28 days
View: Dorsolateral & Ventral

External Genitalia
21 of 28



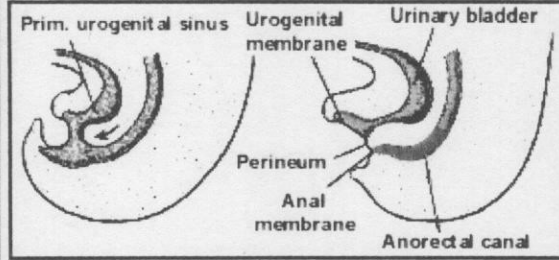
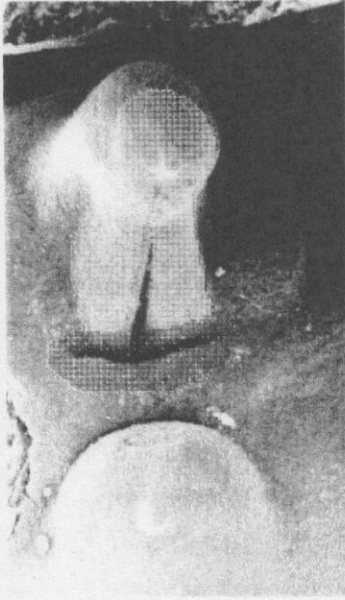
... illustrates that the cloacal membrane is composed of **surface ectoderm** and part of the **endoderm** of the **hindgut**.

Select Image:

▾

Species: Mouse
 Day Gestation: 9
 Approx. Human Age: 28 days
 View: Transverse Cut

External Genitalia
 22a of 28



The cloaca is divided into the anorectal and urogenital regions as the urorectal septum contacts the cloacal membrane. The urogenital membrane and anal membrane then begin to break down.

Select Image:

▾

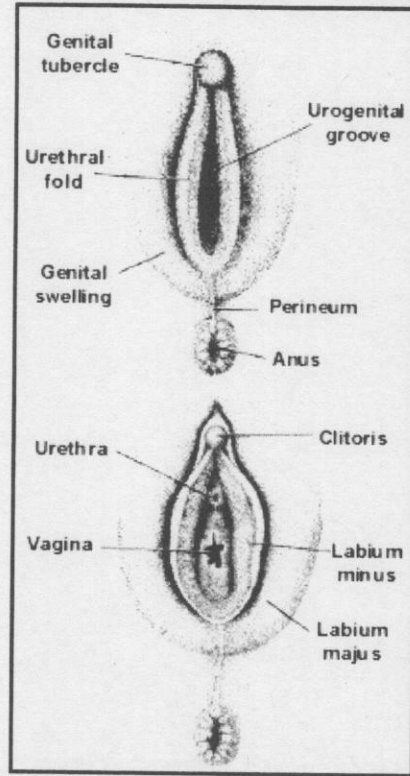
Species: Human
Day Gestation: 50 days
Approx. Human Age:
View:

External Genitalia
23 of 28



Select Image:

▾



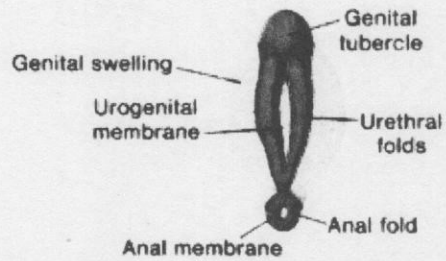
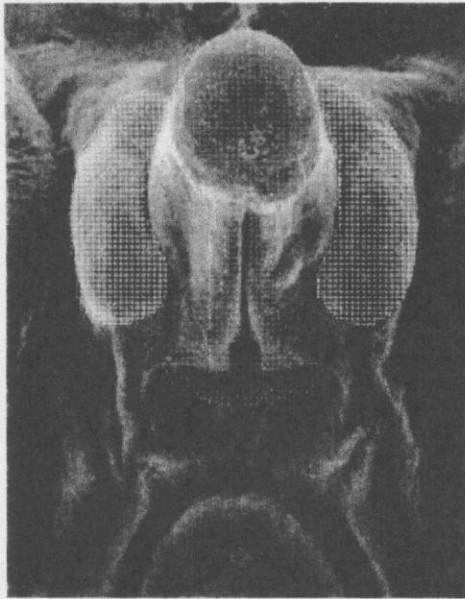
In the female, the urethral folds remain unfused and will form the labia minora, while the genital swellings become the labia majora.

Species: Human
 Day Gestation: 72 days
 Approx. Human Age:
 View:

External Genitalia
 25 of 28



Select Image:



In the 8th week of human development, the male and female external genitalia appear the same.

Species: Human
Day Gestation: 52
Approx. Human Age:
View:

External Genitalia
24 of 28